

# XAdBlue®

## Diesel Exhaust Fluid

**OP**  
BE YOUR WAY



AdBlue® is a high purity urea solution (32,5%) **reducing harmful nitrogen oxides (NOx) emissions** in diesel engines with SCR (Selective Catalytic Reduction) **systems in compliance with the EU emission regulations (ISO 22241).**

POURING SPOUT INCLUDED

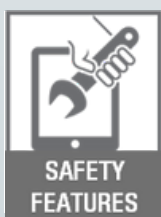


**High quality AdBlue® ensures emission standards are met and provides economic benefits.**

- ✓ Avoidance of costly vehicle replacement
- ✓ Lower maintenance cost
- ✓ Ensured SCR system efficiency
- ✓ Guaranteed life of SCR system
- ✓ Enhanced fuel economy



AdBlue® by OP meets emission standards for diesel engines Euro 4, 5 and 6.



#### Safety Features

The fluid is safe if used in the right way, please read carefully the safety features in the product label before use.



**ISO 22241**  
**VDA Certified**

**Manufacturing plants and production process certified by VDA (German Automotive Industry Association), meeting the latest EU regulations for NOx emissions and providing a full understanding of all required measures.**

**The value of the AdBlue® brand lies in the high quality assurance provided by the producers.**



WWW.OPENPARTS.IT

openparts\_official

OpenParts

## AIR SPRINGS

**Optimal Vehicle Load.**

**Reduce Tire Wear**  
improve tire life and  
performance

**Safety First**  
guarantee comfortable and safe  
driving in all road conditions,  
thanks to the adjustment of the  
set-up and the damping force.

**Load Capacity**  
increase the load capacity of  
the vehicle while keeping the  
trim unchanged, thanks to a  
better weight distribution



**Q** OE  
MATCHING  
QUALITY

**2** YEARS  
WARRANTY  
[ew2years.com](http://ew2years.com)



The TOP solution for your car maintenance  
Choose the OP range, more and more complete and more and more competitive

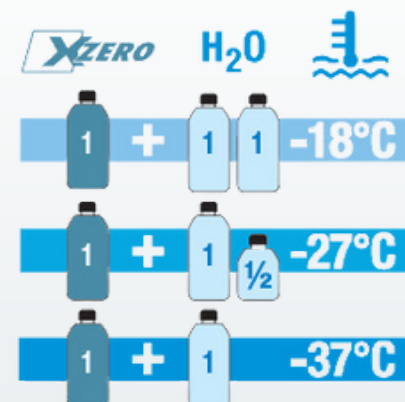


## XZERO A SPECIAL ANTIFREEZE AND CONCENTRATED COOLANT, FOR ALL COOLING CIRCUITS

Antifreeze prevents the radiator from freezing in these conditions, avoiding events such:

- Engine overheating
- Damage of engine parts damaging (overflow tank, engine radiator...) as, while freezing, cooling fluid can expand of over a 10% of its volume.

### DILUTION



*A good antifreeze fluid maintain its efficiency for long time without losing its properties and protect the metallic surfaces of the engine's parts from rust and corrosion.*

## OP Antifreeze Fluid Types

### UNIVERSAL

concentrated multi-season liquid based on ethylene glycol with the addition of a traditional inhibitor package free of nitrites, amines and phosphates. It protects all **traditional engines** from corrosion, frost and overheating. The inhibitors contained provide a high level of corrosion protection to all engine components, cylinders, cylinder heads and water pumps.

### G12

is a concentrated multi-season liquid based on ethylene glycol with the addition of a degradable organic inhibitor package (OAT - Organic Additive Technology) free of nitrites, amines, phosphates, silicates and borates. Protects against freezing, overheating and corrosion very effectively, ensuring fluid circulation within the cooling system. Particularly suitable for **new generation engines**, especially for aluminum engines.

### AVAILABLE IN 1/5 L FORMATS





# OP Brake Discs

## GREY CAST IRON GG20 WITH LAMELLAR GRAPHITE

Ensures resistance to deformations that may arise from high temperatures.

## EXTRA FINE TURNING

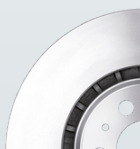
The following extra fine turning performed on surface ensure high disc flatness avoiding DTV phenomenon (Disc Thickness Variation), main cause of vibrations during braking.

## PRECISE EXECUTION OF THE CENTRAL HOLE

and radial fixing holes allows for ideal centering and fixing during installation.

### STANDARD DISCS

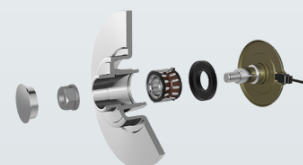
Braking bands finished with extra-fine turning and antioxidant oil treatment. Surface **FLATNESS** and **PARALLELISM** checks prevent uneven wear of the disc and vibration.



### COATED DISCS

DAP Treatment: Silicone painting providing corrosion resistance and protection against any alteration caused by salt, water, and chemicals, preserving disc surfaces for an extended period.

*Disc suitable for vehicles with alloy wheels.*



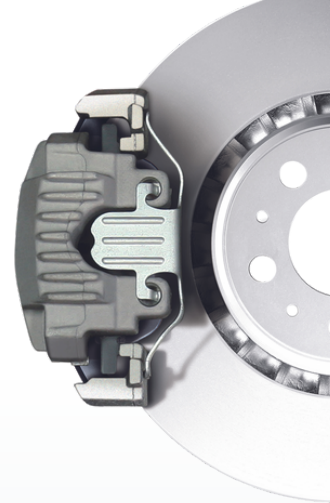
### DISC WITH INTEGRATED BEARING AND ABS RING

Allows for quick and proper disc replacement without the risk of damaging individual components.





# OP Brake Pads



## ORGANIC FRICTION MATERIAL

OP brake pads use organic friction material in 5 different compounds, according to the type of car segments. OP pads components comply with European Directive 2000/53/CE since they are free from heavy metals and asbestos.



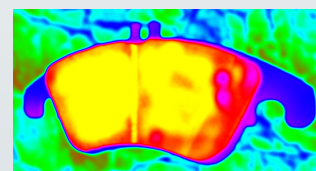
## QUALITY CHECKS

- Test Bench Trials: High-temperature "fading" tests, Noise testing.
- On-Road Trials: Processing braking measurements with computerized systems.



## SCORCHING TREATMENT

Braking surface treatment performed using high pressure electric plates at a temperature of about 650°C. This is an industrial pre running process which anticipates the release of gas, significantly reducing the "initial fading" phenomenon. This treatment provides greater braking safety while leaving the pedal run unchanged.



ACCESSORIES INCLUDED



**ACTIVE CARBON**

# CABIN AIR FILTER

**MAXIMUM PROTECTION, MAXIMUM PERFORMANCE**

Made with non-woven fabric (TNT) consisting of a set of interwoven fibers that create a "sieve" filter system. The closer distance between the folds create a barrier impenetrable to the smallest particles.

## NEUTRALIZES HARMFUL GASES

Active carbon technology captures and retains harmful gases such as benzene, toluene, and ozone, improving the quality of the air you breathe

## GOES BEYOND THE ORDINARY

Captures dust, pollen, and soot, ensuring an interior free from harmful particles

## ADVANCED ENGINEERING

Precision-designed to deliver superior performance, providing a cutting-edge technological solution for in-car air quality



**WHERE AIR QUALITY  
MEETS PRECISION  
ENGINEERING**

**BREATHE FREELY,  
DRIVE CONFIDENTLY**



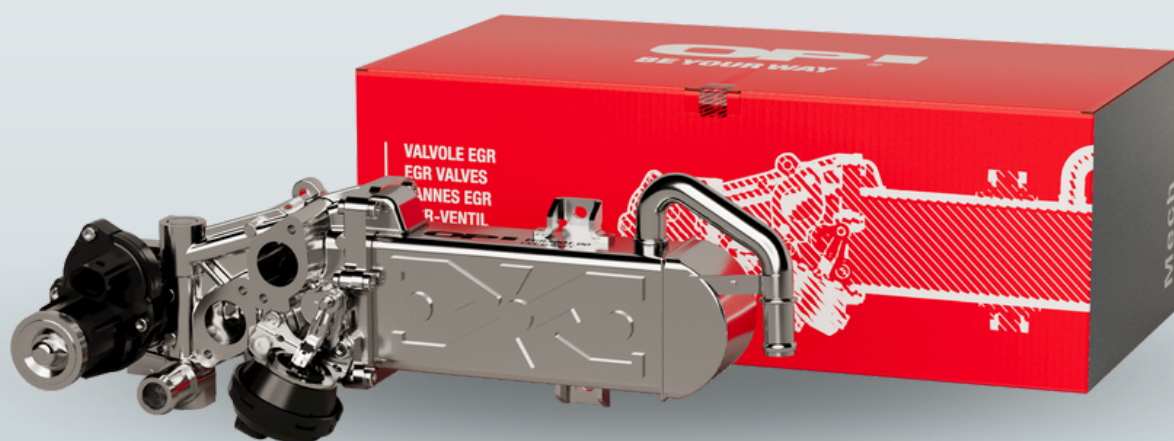
The TOP solution for your car maintenance  
Choose the OP range, more and more complete and even more competitive

## EGR VALVE

### Reduce Emissions, Maximize Efficiency, Drive with Sustainability

The valves and EGR modules reintroduce a controlled amount of exhaust gas (up to approximately 15%) into the engine's intake manifold, thereby reducing the combustion temperature and the production of NOx.

- **NEW** and **COMPLETE** with accessories
- **TESTED** and **CERTIFIED**
- **HIGH-QUALITY MATERIALS**







# ELECTRIC WATER PUMPS

**Optimal Cooling System Performance.**

## Maximum Guaranteed Efficiency

Reduction of friction losses and fuel consumption thanks to independent integrated electronic regulation.

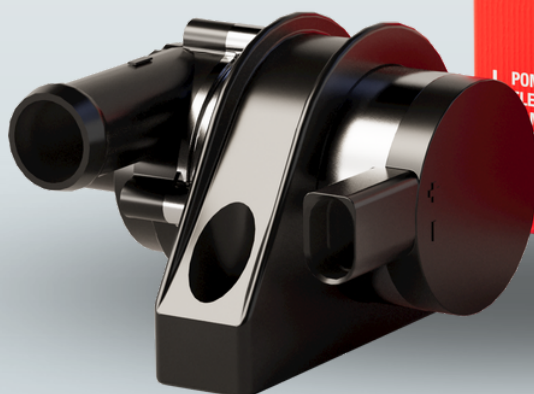
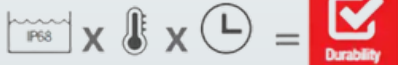
## Easy Installation

Packaging includes support bracket or electric cable, as per original equipment.

## Power and Reliability

IP68 Waterproofing, High-Quality Materials, Laser Sealing, and Extreme Testing for Maximum Durability and Sealing.

### DURABILITY TEST



The TOP solution for your car maintenance  
Choose the OP range, more and more complete and even more competitive

# ENGINE FILTERS

**OP!**  
BE YOUR WAY

## MAXIMUM POWER, MAXIMUM FILTRATION

OP engine filters are manufactured with modern technologies and high quality materials to ensure powerful filtering and constant performance over the time, maintaining high engine efficiency.

### ENGINE AIR FILTERS

Filtration power up to 99.9%, removing dust, soot, and organic residues. Made with high-quality filter paper and innovative resins, they sustain engine performance, providing durability and protection against water, oil, and fuel vapors.

*Panel or Circular Filters*

### FUEL FILTERS

Shielding against dust, rust, and water, ensuring longevity for the engine's fuel system. Made with high-strength materials, impregnated with resins, and synthetic fibers.

*Gasoline, injection engines, Diesel*

### ENGINE OIL FILTERS

Retention of abrasive particles and combustion residues, preserving engine integrity. Crafted with filter paper and phenolic or epoxy resins to withstand high temperatures and aggressive chemical substances.

*Cartridge or Can-type*



**GUARANTEE  
QUALITY**



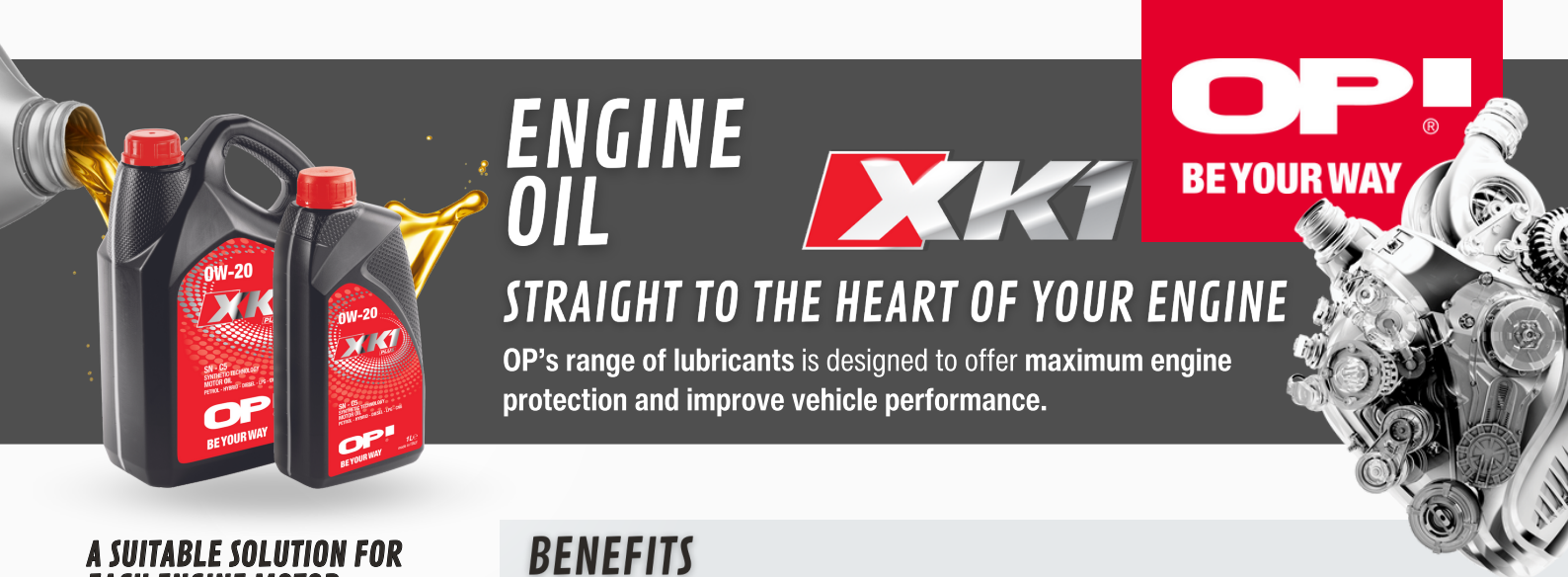
Comply with technical specifications and production standards supplied by the manufacturer, in accordance with the provisions of Regulation (EEC) No. 1400/2002.



### ECO-FRIENDLY COMPONENTS

Some oil and fuel filters features metal free cartridges, for an easier replacement and to limit waste disposal.





# ENGINE OIL



**OP!**  
BE YOUR WAY

## STRAIGHT TO THE HEART OF YOUR ENGINE

OP's range of lubricants is designed to offer maximum engine protection and improve vehicle performance.

### A SUITABLE SOLUTION FOR EACH ENGINE MOTOR

It complies with international car manufacturer standards and is suited for the most recent engines.

 Made in Italy

### BENEFITS

Thanks to the high fluidity, the oil is able to penetrate and adhere deep in a short time, ensuring uniform lubrication and reducing friction.

- **Low viscosity:** guarantees better cold start performance
- **Fuel Economy:** reduced fuel consumption
- **Chemical stability at high temperatures:** reduced oil consumption and degradation
- **Low environmental impact:** reduced CO2 emissions

**MINERAL**

**SEMI-SYNTHETIC**

**FULLY SYNTHETIC**

The latest generation multigrade lubricating oil specially formulated for high-performance multi-valve petrol engines and diesel engines.

Exceeds the most important specifications of car manufacturers. The accurate balance of the base and the careful selection of additives ensure: **maximum engine protection, optimum lubrication in all operating conditions, and reduced evaporation resulting in lower oil consumption.**

**Very high-quality level** in line with the latest international standards and with the **specifications of European car manufacturers powered by petrol or diesel.** The **reduced content of sulfur, phosphorus and derivatives (SAPS)** makes it ideal for the use of cars of more recent conception, mounting devices for the treatment of fumes such as particulate filters (FAP or DPF).

	MINERALE MINERAL	SEMI SINTETICO SEMI-SYNTHETIC	SINTETICO SYNTHETIC	5W - 30					0W - 30	5W - 20	0W - 20
	15W - 40	10W - 40	5W - 40	ADVANCE	SPECIAL	EVOLUTION	ENDURANCE	PLUS			
CODICE / CODE	OEX1540	OEX1040	OEX5401	OEX5301	OEX5302	OEX5303	OEX5304	OEX5305	OEX0301	OEX5201	OEX0201
SAE	15W-40	10W-40	5W-40	5W-30	5W-30	5W-30	5W-30	5W-30	0W-30	5W-20	0W-20
API	SL/CF	SL/CF	SN/CF	SL/CF	SN/CF		SN/CF	SN/CF		SN/CF	SN
ACEA	A3/B3 - A3/B4	A3/B3 - A3/B4	C3	A5/B5	C2	C3	C3	C4	C2	C5	C5
ILSAC										GF-5	
BMW			LL-04			LL-04	LL-04				
FCA		9.55535-G2	9.55535-S2		9.55535-S1		9.55535-S3		9.55535-GS1/DS1		
FORD			WSS-M2C917-A	WSS-M2C913-D					WSS-M2C950-A	WSS-M2C948 A&B	
JAGUAR-LAND ROVER				STJLR.03.5003					STJLR.03.5007	STJLR.03.5004	STJLR.51.5122
MERCEDES BENZ	229.1	229.1	226.5 / 229.31			229.51	229.51	226.51			229.71
OPEL			GM DEXOS 2		GM DEXOS 2		GM DEXOS 2				
PORSCHE			A40			C30	C30				
PSA					B71 2290						
RENAULT			RN0700 / RN0710	RN0700	RN0700			RN0720			
VOLKSWAGEN	501.01/505.00	500.00/505.00	502.00/505.00/505.01			504.00/507.00	502.00/505.00				





# FUEL SUPPLY SYSTEM

## Fueling Power with Precision

Immersion device, to transfer the fuel from the tank to the injectors on the engine, providing the fluid necessary for the continuous operation of the engine with constant pressure.



### Cover

with fuel delivery and  
return pipes

### Electrical Connector

+ ECU connector



### Fuel Pump

### Safety Valve

## RANGE



### Standard

For single tank system



### With Cables and Intake Pipes

For dual-tank systems

### Fuel Level Incidator

Float



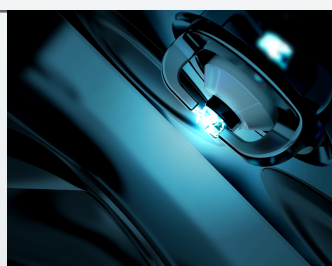
# IGNITION COILS

## The energy that transforms the engine into pure power

Ignition coils transmit the impulse to the spark plugs to raise the voltage between 10,000 and 25,000 volts, generating the power needed to start the engine.

### Highly Resistant Materials

Materials of high strength to safeguard electrical circuits and internal components from the aggression of oil and gasoline vapors that could lead to short circuits and malfunctions.



### Maximum Reliability

- Features and quality standards equivalent to OEM
- Highly resistant materials
- High mechanical and thermal stability
- Effective protection against short circuits
- Performance even in cold starts

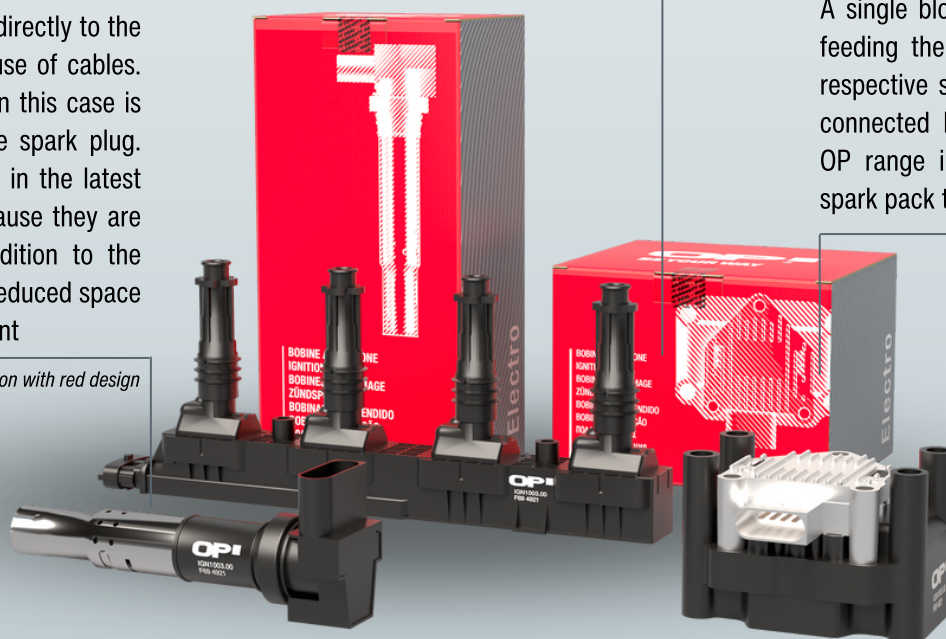
### MONOBLOCK

Consisting of multiple single coils integrated into a single component. The number of coils in the block depends on the number of cylinders in the engine. The impulse is generated directly on the spark plug without cable connection.

### COIL ON PLUG

Single coils, are applied directly to the spark plug without the use of cables. The high voltage pulse in this case is generated directly in the spark plug. Type of coils most used in the latest generation engines, because they are easier to replace in addition to the fact that they occupy a reduced space in the engine compartment

*Available the coil on plug sport version with red design*



### PACK

A single block containing several coils feeding the spark plugs through their respective single high output voltages, connected by spark plug cables. The OP range includes single and double spark pack type coils.



FOR AN EFFICIENT SUSPENSION SYSTEM



OP<sup>®</sup>

BE YOUR WAY

# Shock Absorbers

*COMFORT AND SAFETY AT EVERY TURN OF THE ROAD*

OP shock absorbers are designed and manufactured using high-precision processes to enhance **vehicle safety and control** without sacrificing driving comfort.



## ROD PISTON AND VALVES GROUP

C45 or C35 steel  
Machine grinding  
Chrome plating  
Steel piston rod with  
Teflon coating



## OIL SEAL ROD

Original equipment quality (NOK)  
Nitrile synthetic rubber (NBR  
rubber, sintetic rubber with high  
wear resistance); Double sealing lip



## TWIN-TUBE

Fe360B steel  
Lapping processing on the internal  
tube surface  
Protective coating treatment

## SV-3 OIL

Oil with low emulsion level. It keeps  
its original features even with low  
temperatures (-40°C)

## CONTROL VALVES

Road stability safet  
Double-stage valves with calibration  
up to 1/100 mm

## NITROGEN GAS

Pressurized nitrogen minimizes  
cavitation phenomena and  
contributes to damping action

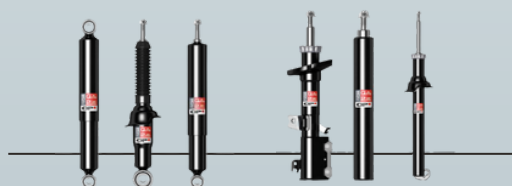
## CERTIFIED QUALITY

OP shock absorbers undergo qualitative testing according to **JSAE-JASO C602 international standards** and parameters, including comparative tests with original equipment products.

GUARANTEE  
QUALITY



## RANGE



**Q** OE  
MATCHING  
QUALITY  
**2** YEARS  
WARRANTY  
ew2years.com



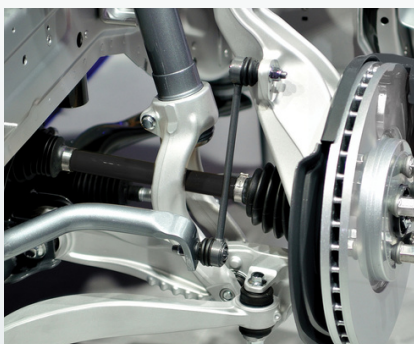
**STABILITY AND SAFETY ON THE ROAD** ///

**OP!**  
BE YOUR WAY

# OP Steering and Suspension

Suspensions and steering components are fundamental for the vehicle safety and stability.  
Periodical maintenance avoids tyres irregular wear, wheels misalignment and unstable road holding.

**GUARANTEE  
QUALITY**



## STRONG AND RESISTANT

The great quality of raw materials, such as steel and aluminum, preserves in time the components properties of traction, compression and torsion.



### OP steering and suspension components:

steering rod, steering head, axial joint, suspension joint, swing arm, swing arm support and stabilizer.

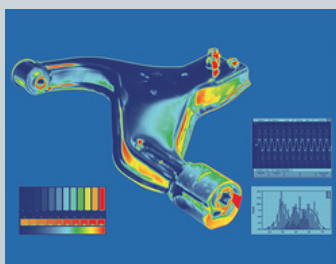
**2 YEARS  
WARRANTY**  
ew2years.com

**Q OE  
MATCHING  
QUALITY**

## QUALITY CHECKS

Control of different parameters through dynamic, metrological and metallographic tests:

- Quality of incoming raw materials and semi-finished products
- Quality of the production process
- Compliance with the OE tolerances
- Life tests on the single components.



FOR SMOOTH AND CONTROLLED DRIVING

# TRANSMISSIONS

MAXIMUM QUALITY AND COMPONENT SAFETY

**OP!**  
BE YOUR WAY

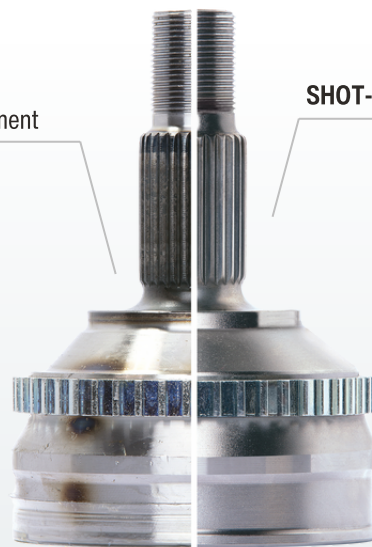
## SHOT-BLASTING

OE standard treatment, eliminating blurrings by highpressure impact of small steel balls over the part. Roughness and projections are smoothed out for perfect setting and increased fatigue strength.



NO Treatment

with  
SHOT-BLASTING



## CASE-HARDENING

The treatment provides a carbon supply over the joint's body to boost and increase durability.



## CONSTANT VELOCITY JOINTS



The Joints are subjected to **phosphatising protective treatment** that involves the soaking of the component into a solution of sulphuric acid. The treatment improves smoothness and resistance to corrosion.

## DRIVESHAFTS



OP range provides only **new**, nonrefurbished, driveshafts (front and rear), to ensure the best quality and safety from its products.

## BOOT KIT



**Fast assembly kit for Joint protection**, containing neoprene rubber boot, band, seegger, grease.

## WHEEL BEARING KIT



OP offers a **kit in 4 versions**, matching the 4 generation of car's bearing, from single bearing kit to the biflanged one.

SMOOTH TRANSMISSION, RELIABLE PERFORMANCE

**OP**  
BE YOUR WAY

# OP Wheel Bearing Kit

The wheel hub bearing plays an important role in the **vehicle transmission system** and for the **safety** of the driver. Its function is to allow the correct rotation of the wheel along the axis in order to minimize the friction force, with benefits also on driving performance.

Correct installation not only **prolongs the life cycle** of the car but also has positive effects on the **performance** and **durability** of the other transmission-related components.

OP offers a **kit in 4 versions** matching the **4 generation** of car's bearing, from single bearing kit to the biflanged one.



BEARING

0

GENERAZIONE  
GENERATION

COAXIAL BEARING

1

GENERAZIONE  
GENERATION

BEARING + FLANGE

2

GENERAZIONE  
GENERATION

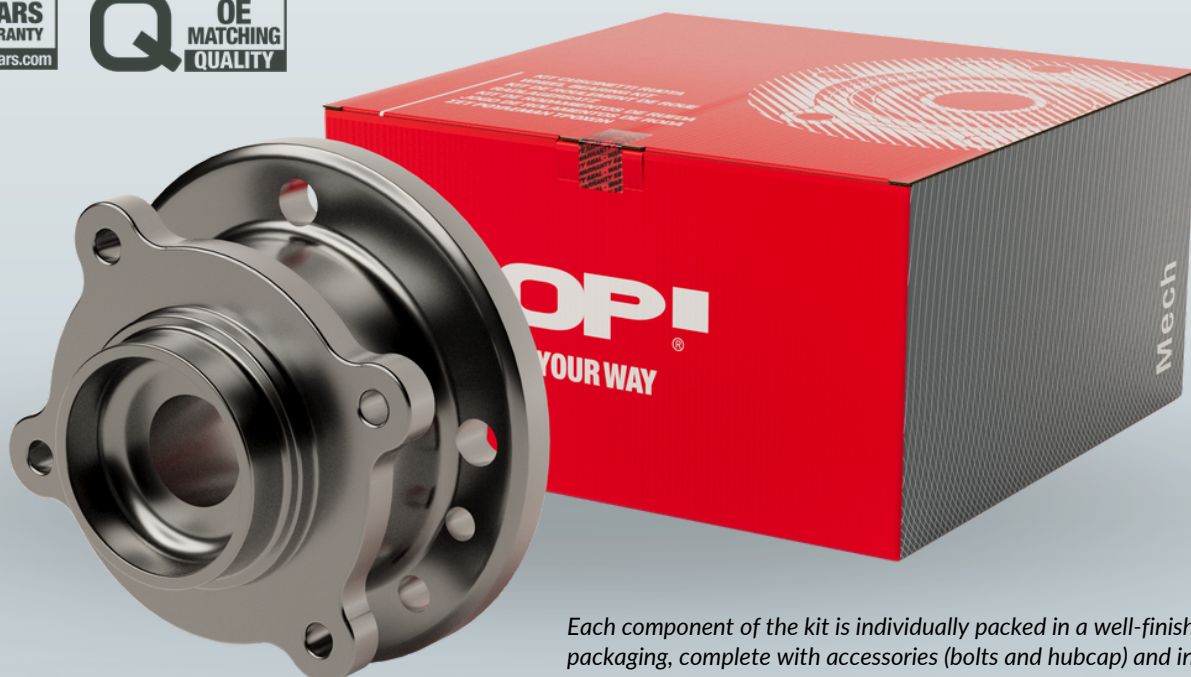
BI-FLANGE BEARING

3

GENERAZIONE  
GENERATION

**2** YEARS  
WARRANTY  
ew2years.com

**Q** OE  
MATCHING  
QUALITY



Each component of the kit is individually packed in a well-finished packaging, complete with accessories (bolts and hubcap) and instructions.



# CONVENTIONAL PLUS

**OP!**  
BE YOUR WAY

## REINFORCED

Steel frame, thickness 1.4 mm

## RESISTANT

Painted with electrostatic powders

## REFINISHED

With anti-bumping plastic terminals



## RUST-PROOF

With stainless steel rivets

## TIGHT

Harmonic steel spring

## NOISELESS

Refill with graphite treatment

## OEM QUALITY

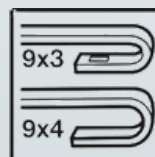
Tested and certified features

## GUARANTEE QUALITY



## U-HOOK CONNECTION

Suitable for the widespread use of wiper blades



## EASY INSTALLATION

Fast installation of brushes in 4 simple movements, shown at the back of each pack



# FLAT EXTRASLIM EVOLUTION

**OP!**  
BE YOUR WAY

**UNIVERSAL RANGE, MAXIMUM EFFICIENCY**



## REINFORCED REFILL

Chloroprene rubber refill with 7 mm thickness increases the wiper pressure over the screen, ensuring a flawless and silent cleaning, even with heavy weather conditions or high-speed drive



## REVERSIBLE ADAPTER

Adapts to both right-hand and left-hand driving and all wiper movements based on the blade's motion



## TEFLON FINISHING

Latest generation TEFLON finishing, for a smoother movement of the blade on the windscreen

## SUPERIOR SMOOTHNESS



## AERODYNAMIC SPOILER

Perfectly conforms to the windshield's curvature for streak-free, uniform cleaning. The reduced profile also improves visibility from the cockpit

## PERFECT CLEANING



## UNIVERSAL RANGE

11 adapters

**GUARANTEE  
QUALITY**



## OEM QUALITY

Tested and certified features

## UNIVERSAL RANGE

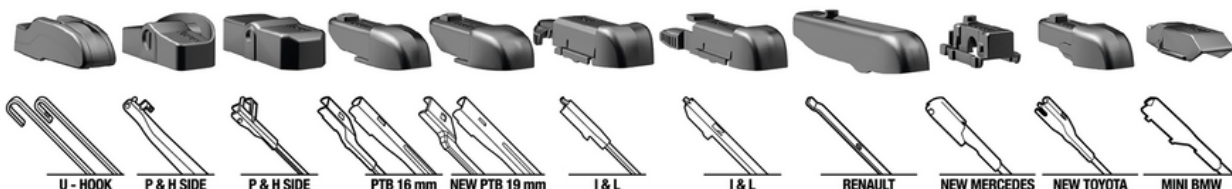
11 adapters for superior all-around coverage and greater adaptability to all types of attachments

## QUICK INSTALLATION

Installation guide printed in the back of the wipers pack, specific for each arm and adapter



WWW.OPENPARTS.IT



# REAR PLUS

**OP!**  
BE YOUR WAY

**SUPERIOR SMOOTHNESS, IMPECCABLE CLEANING**

## STEEL REFILL SUPPORT

Maintains refill rigidity for better adherence to the rear window.

## SUPPORT FRAME AS OEM

Equivalent to originals for complete market coverage



## GRAPHITE TREATMENT

Refill with chloroprene rubber and GRAPHITE finishing, for a smoother movement of the blade on the windscreen

**SUPERIOR SMOOTHNESS**

## CHLOROPRENE RUBBER REFILL

Enhanced durability in all conditions

**INCREASED TOUGHNESS**



**EU CAR FLEET 90%**

**GUARANTEE  
QUALITY**



## OEM QUALITY

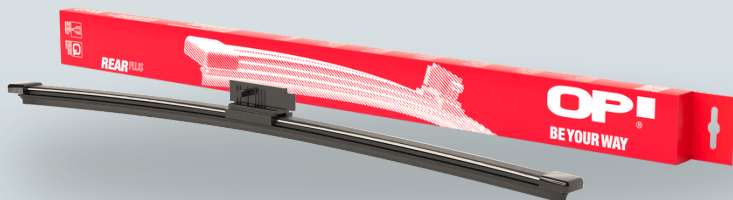
Tested and certified features

## RANGE

Range aligned with the first outfit equipment covering 90% of the European car fleet

## FITTING INSTRUCTION

Fitting instruction specific for each connection type, according to the series of wiper blades chosen (A-flat or B or C-Plastic-Metal Line)



WWW.OPENPARTS.IT

The TOP solution for your car maintenance  
Choose the OP range, more and more complete and even more competitive